

## Uticom Composite Sign Posts

Uticom Systems, Inc. Composite Sign Posts are lightweight, strong and resistant to all environments. Get rid of heavy, rusting, steel sign and marking posts forever.

**Lightweight** – Type 2 is 75% lighter than steel U-channel posts.

**Strong** – Type 2 is 5 times torsionally stronger than steel.

**Corrosion-Proof** – Will not rust or corrode due to weather or saltwater.

**Non-Conductive** – Will not conduct charges due to electricity or lightning.

**Simple to Install** – Only a standard post driver is needed during installation.

**Added Features** – Post caps are incorporated into the design to keep water and wildlife out.

**Fire Resistant** – Does not burn easily in either natural or man-made fires.

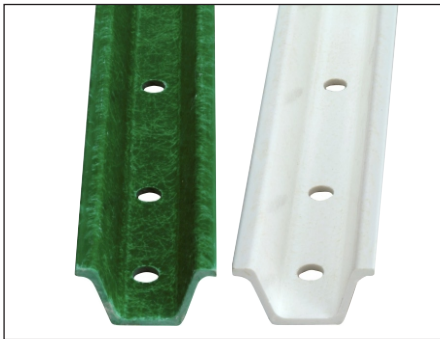
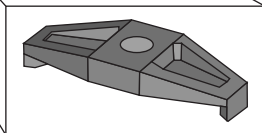
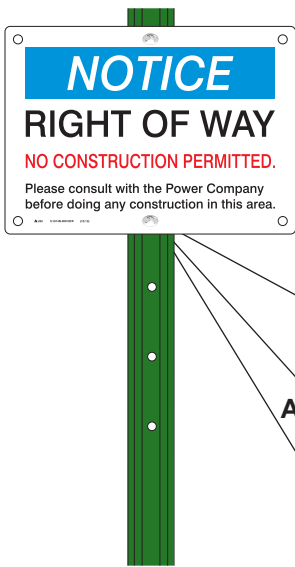
**Aesthetically Complementary** – Color options are available to either blend into or stand out from the surrounding environment.

### Anti-Theft Bracket

#### Part # USG-U-2-X

Nylon bracket for 1/4" hole with one-way stainless steel bolt for U-channel and square channel posts.

10 sets per package



**Type 1**  
For Signs up to 12" x 18"



**Type 2**  
For Signs up to 30" x 30"



**Type 3**  
For Signs up to 36" x 36"

	Type 1 - Green	Type 1 - White	Type 2 - Green	Type 2 - White	Type 2 - Yellow	Type 3 - Green	Type 3 - White	Type 3 - Yellow
6'	UCSP1-72-GR	UCSP1-72-WH	UCSP2-72-GR	UCSP2-72-WH	UCSP2-72-YL	UCSP3-72-GR	UCSP3-72-WH	UCSP3-72-YL
7'	UCSP1-84-GR	UCSP1-84-WH	UCSP2-84-GR	UCSP2-84-WH	UCSP2-84-YL	UCSP3-84-GR	UCSP3-84-WH	UCSP3-84-YL
8'	UCSP1-96-GR	UCSP1-96-WH	UCSP2-96-GR	UCSP2-96-WH	UCSP2-96-YL	UCSP3-96-GR	UCSP3-96-WH	UCSP3-96-YL